

ACCESSORIES CATALOGUE

**SCOOTERS**  
**2023**



# Make your Honda truly yours

What is better than Honda Genuine Accessories to make your Honda truly yours? For extra luggage capacity, improved comfort, rugged protections, extended performance or just an even better looking scooter, we have everything covered. Built with the same attention to detail as your Honda, supported by a 2-year warranty, our accessories will suit perfectly your scooter and add to its value. Ask your local Honda Dealer. He knows how to make your Honda scooter truly yours.



## CONTENTS

FORZA 750 <b>UPDATED</b>	04
FORZA 350 <b>UPDATED</b>	12
FORZA 125 <b>UPDATED</b>	16
X-ADV 750 <b>UPDATED</b>	20
ADV 350	28
SH350I <b>UPDATED</b>	32
SH125I / SH150I <b>UPDATED</b>	38
PCX 125 <b>UPDATED</b>	42
SH MODE 125	46
VISION 110 <b>UPDATED</b>	48
SUPER CUB C125	50

**Customized parts** are accessories developed by third parties and offered to complement the line-up of genuine accessories by giving additional personalization options. Please consider the disclaimer at the back cover for terms and conditions.



# FORZA 750



21YM location photos

## ACCESSORIES FORZA 750



## MUST HAVE



### CONSOLE BAG 08L79-MKT-000

Perfectly fitting the space between the rider's knees, this Black 9L Console Bag is ideal to carry your everyday essentials. Convenient slot available on the front for smartphone wires. Rain cover included.

Maximum load capacity: 2 kg

21YM shown



21YM location photo

## ACCESSORIES PACKS

	URBAN PACK	TRAVEL PACK	COMFORT PACK 08HME-MKV-COMF	STYLE PACK 08HME-MKV-STY	SPORT PACK 08HME-MKV-SPRT
50L Smart Top Box & Opener	•				
Top Box Backrest	•				
Design Panel for Top Box	•				
25l Top Box Inner Bag	•				
Console Bag	•				
Aluminium Rear Carrier	•	(*)			(**)
Pannier Set		•			
Pannier Support Stays		•			
Pannier Inner Bags		•			
Design Panels For Panniers		•			
1 Key System Inner Cylinder		•			
Upper Deflector			•		
Lower Deflector			•		
Heated Grips			•		
Parking Lever				•	
Parking Lever Cover				•	
Lateral Covers				•	
Floor Panels				•	
Grip Ends					•
Passenger Backrest					•
Sports Wind Shield					•
<b>COLOURS</b>					
Mat Jeans Blue Metallic *PB-417*	08HME-MKV-URBL	08HME-MKV-TRBL			
Pearl Glare White *NHB-53P*	08HME-MKV-URBW	08HME-MKV-TRWH			
Mat Ballistic Black Metallic *NHA-86M*	08HME-MKV-URBK	08HME-MKV-TRBK			
Iridium Gray Metallic *NHC-C65M*	08HME-MKV-URBG	08HME-MKV-TRGR			

\* Required but not included.  
\*\* Not compatible.



21YM location photo

## LUGGAGE



### SMART TOP BOX KIT 08ESY-MKT-TB50S

50L Top Box with SMART key system that allows key-less operation by carrying the key fob close. It can store up to 2 full size helmets inside. Backrest included. Required Rear Carrier 08L74-MKT-D00ZC and colour matching panel sold separately (see colour options below).

Available Top Box colour panels:

- Mat Jeans Blue Metallic 08L82-MKT-D00ZC
- Pearl Glare White 08L82-MKT-D00ZF
- Iridium Grey Metallic 08L82-MKT-D00ZM
- Mat Ballistic Black Metallic 08L82-MKT-D00ZN



### PANNIERS INNER BAGS 08L78-MKT-D00

Set of 2 inners bags designed to fit the shape of the panniers. Available in black, featuring the Honda logo and featuring a shoulder strap for easy carrying.



### TOP BOX INNER BAG (25L) 08L77-MKT-D00

Top Box inner bag featuring the Honda logo, with a carrying capacity of 25L and a practical shoulder strap for easy carry.



### 38L TOP BOX 08ESY-MKT-TB350K

38L Top Box suitable for one helmet. The Honda one key system included allows using the ignition key to lock it.

Maximum load capacity: 6 kg  
Rear Carrier sold separately.



### 38L TOP BOX INNER BAG 08L75-MJP-G51

Black nylon bag with 15L of capacity with embroidered silver Honda wing logo on the top, with red zippers. Comes with adjustable shoulder belt and carrying handles.



### PANNIERS SET 08ESY-MKV-PNA

Set of 2 panniers with a 26L capacity on the right side, and 33L on the left. The one key system allows to open and close the panniers by using the key of the scooter. Pannier stays included. Rear Carrier 08L74-MKT-D00ZC required but not included. Matching colour panel not included, see available colours below:

- Mat Jeans Blue Metallic 08L81-MKT-D00ZH
- Pearl Glare White 08L81-MKT-D00ZM
- Iridium Gray Metallic 08L81-MKT-D00ZQ
- Mat Ballistic Black Metallic 08L81-MKT-D00ZR



### REAR CARRIER 08L74-MKT-D00ZC

Aluminium Rear Carrier required for the installation of all available Top Boxes. It's design features handle grips for added passenger comfort.  
Maximum load capacity: 10kg

FORZA 750



21YM location shown

## COMFORT



### GRIP HEATERS 08T71-MKT-000

The 5 temperature levels of these slim heated grips are displayed on the TFT monitor. When the ignition is switched off, the last position is memorized. An integrated circuit protects the battery from draining.



### UPPER DEFLECTOR 08R72-MKV-000

Featuring the FORZA logo, the Upper Deflectors set improves comfort by reducing the airflow around the rider's waist.



### LOWER DEFLECTOR 08R71-MKV-000

Featuring the FORZA logo, the Lower Deflectors set improves comfort by reducing the airflow around the rider's knees.

## DESIGN



### PARKING LEVER COVER 08F72-MKT-000

With its Anodized Black treatment and Honda logo, this Aluminium Parking Lever Cover will make your scooter stand out.

### PARKING LEVER 08F70-MKT-000

With the same anodized black treatment as the cover, this Aluminium Parking Lever adds the final touch to your FORZA 750 cockpit.



### LATERAL COVERS 08F71-MKV-000

Stainless steel covers protecting the body parts from kick damages and improving the quality feel of your bike.



### FLOOR PANEL 08P70-MKV-000

A set of left and right stainless-steel floor panels, featuring the FORZA logo with anti-slip pads that will add a touch of elegance to your scooter.



### CUSTOMIZED PART

### GRIP ENDS 08Z4M-MAD-005

Give your Forza a sportier look with these Grip Ends and enhance the motorcycle's protection in case of fall. Made of machined aluminium and finished in a black and silver.



### CUSTOMIZED PART

### SMOKED LOW SCREEN 08Z4M-MWS-006

This short and dark windscreen enhances the sportiness of the Forza.

Replaces the standard wind screen and it's mounted in the same fixing points.

Strong polycarbonate surface processed to make the surface resistant to damage.

### CUSTOMIZED PART

### PASSENGER BACKREST 08Z4M-MSE-009

This high quality backrest improves the passenger comfort while keeping a sporty look.

Not compatible with the rear carrier, which is necessary to install both the top box and the side panniers.

### CUSTOMIZED PART

### LEG COVER 08Z4M-MLC-007

The leg cover, with a removable thermal layer, can be used throughout the year in different temperature and weather conditions.

Its waterproof and resistant outer cover will keep the rider dry while allowing breathability.

It can be set up for the summer by removing the winter part, leaving the rigid spoiler fixed to the bodywork, from where an emergency rain cover and practical seat cover can be pulled out when required.

**FORZA 350**



## ACCESSORIES **FORZA 350**



## MUST HAVE



### **45L SMART TOP BOX KIT**

**08ESY-K40-TP22ZB / 08ESY-K40-TP22ZH / 08ESY-K40-TP22ZJ /  
08ESY-K40-TP23ZN / 08ESY-K40-TP23ZP**

Kit containing the 45L Smart-Key Top Box and all the components required for its installation: Electronic Lid opener, Backrest, Design panel and Rear Carrier.

This top box can easily store 2 helmets.

Maximum load capacity: 10kg

5 colours available:

- Mat Cynos Grey Metallic (08ESY-K40-TP22ZB)
- Mat Pearl Pacific Blue (08ESY-K40-TP22ZH)
- Pearl Falcon Grey (08ESY-K40-TP22ZJ)
- Pearl Siena Red (08ESY-K40-TP22ZN)
- Mat Robust Grey Metallic (08ESY-K40-TP22ZP)



## ACCESSORIES



### 35L TOP BOX

08L70-K40-F30ZA / 08L70-K40-F30ZJ / 08L70-K40-F30ZK / 08L70-K40-F30ZN / 08L70-K40-F30ZP

35L Top Box suitable for one helmet with Comfort Pad and Key system. Maximum load capacity: 10 kg. Rear Carrier (08L73-K1B-D01ZD) sold separately.

5 colours available:

- Mat Cynos Grey Metallic (08L70-K40-F30ZA)
- Mat Pearl Pacific Blue (08L70-K40-F30ZJ)
- Pearl Falcon Grey (08L70-K40-F30ZK)
- Pearl Siena Red (08L70-K40-F30ZN)
- Mat Robust Grey Metallic (08L70-K40-F30ZP)



### WHEEL STRIPES

08F76-K40-F01ZM / 08F76-K40-F01ZN / 08F76-K40-F01ZP

Personalize your scooter wheels with this easy to apply stripes kit.

3 colours available:

- Gold (08F76-K40-F01ZM)
- Candy Graceful Red (08F76-K40-F01ZN)
- Sahara Blue Metallic (08F76-K40-F01ZP)



### SPECIAL SEAT

08R70-K1B-D70

Thanks to its softer construction, this seat provides an extra level of comfort enhancing your riding experience, while adding a touch of sportiness thanks to its black and grey design with contrasting red stitching.



### FLOOR PANEL

08F70-K1B-D60

A set of left and right stainless steel floor panels with anti-slip pads that will add a touch of elegance and sportiness to the Forza.



### GRIP HEATERS KIT

08ESY-K2A-HG23

Extremely slim heated grips with integrated control to maximize the rider comfort. Feature 3 variable heating levels and an integrated circuit to protect the battery from draining.

Kit containing the Grip Heaters, the Attachment and Honda High-Temperature cement.



### OUTDOOR CYCLE COVER XL

08P34-BC3-801

Protects the paintwork against U.V. rays. Water-resistant breathable fabric that allows the scooter to dry while covered. Two holes in front lower area for easy introduction of U-lock.

### U-LOCK 120/340

08M53-KAZ-800

High security U-shaped lock made of hardened special steel. Anti-drill and anti-pick disc lock.

The dimensions of this lock are 120-340. Can be carried easily in the compartment located under the seat.

### INNER BAG FOR 35L TOP BOX

08L09-M6S-D30

Black nylon bag with embroidered silver Honda wing logo on the top, with red zippers. Expandable from 15 to 25L. Comes with adjustable shoulder belt and carrying handles.

**FORZA 125**



## ACCESSORIES **FORZA 125**



## MUST HAVE



### **45L SMART TOP BOX KIT**

**08ESY-K40-TP222C / 08ESY-K40-TP222D / 08ESY-K40-TP222E / 08ESY-K40-TP222F**

Kit containing the 45L Smart-Key Top Box and all the components required for its installation: Electronic Lid opener, Backrest, Design panel and Rear Carrier.

This top box can easily store 2 helmets.

Maximum load capacity: 10kg

5 colours available:

- Mat Carnelian Red Metallic (08ESY-K40-TP222C)
- Mat Pearl Pacific Blue (08ESY-K40-TP222D)
- Pearl Falcon Grey (08ESY-K40-TP222E)
- Mat Cynos Grey Metallic (08ESY-K40-TP222F)

**FORZA 125**



**SPECIAL SEAT\***

**08R70-K1B-D70**

Thanks to its softer construction, this seat provides an extra level of comfort enhancing your riding experience, while adding a touch of sportiness thanks to its black and grey design with contrasting red stitching.



**FLOOR PANEL\***

**08F70-K1B-D60**

A set of left and right stainless steel floor panels with anti-slip pads that will add a touch of elegance and sportiness to the Forza.

# ACCESSORIES



**35L TOP BOX**

**08HME-K40-F35ZH / 08HME-K40-F35ZI / 08HME-K40-F35ZO / 08HME-K40-F35ZR**

35L Top Box suitable for one helmet with Comfort Pad and Key system. Maximum load capacity: 10 kg. Rear carrier required 08L70-K40-F00 sold separately. 5 colours available:

- Mat Cynos Grey Metallic (08L70-K40-F30ZA)
- Mat Carnelian Red Metallic (08L70-K40-F30ZE)
- Mat Pearl Pacific Blue (08L70-K40-F30ZJ)
- Pearl Falcon Grey (08L70-K40-F30ZK)



**WHEEL STRIPES**

**08F76-K40-F01ZM / 08F76-K40-F01ZN / 08F76-K40-F01ZP**

Personalize your scooter wheels with this easy to apply stripes kit. 3 colours available:

- Gold (08F76-K40-F01ZM)
- Candy Graceful Red (08F76-K40-F01ZN)
- Sahara Blue Metallic (08F76-K40-F01ZM)



**GRIP HEATERS KIT**

**08ESY-K2A-HG23**

Extremely slim heated grips with integrated control to maximize the rider comfort. Feature 3 variable heating levels and an integrated circuit to protect the battery from draining.

Kit containing the Grip Heaters, the Attachment and Honda High-Temperature cement.



**OUTDOOR CYCLE COVER XL**

**08P34-BC3-801**

Protects the paintwork against U.V. rays. Water-resistant breathable fabric that allows the scooter to dry while covered. Two holes in front lower area for easy introduction of U-lock.

**U-LOCK 120/340**

**08M53-KAZ-800**

High security U-shaped lock made of hardened special steel. Anti-drill and anti-pick disc lock.

The dimensions of this lock are 120-340. Can be carried easily in the compartment located under the seat.

**INNER BAG FOR 35L TOP BOX**

**08L09-M6S-D30**

Black nylon bag with embroidered silver Honda wing logo on the top, with red zippers. Expandable from 15 to 25L. Comes with adjustable shoulder belt and carrying handles.

\* Already included in the Special Edition version of the Forza 125.

# X-ADV



21YM location shown

## ACCESSORIES X-ADV



## MUST HAVE



### 50L SMART TOPBOX 08ESY-MKT-STB50

50L Top Box with SMART Opener system allowing to open the lid without taking the key out the pocket. Can hold two helmets in. The built-in key cylinder can be used to lock the top box even when is removed from the carrier. A backrest is included to improve passenger comfort.

Rear carrier and Aluminium Panel sold separately.  
Maximum load capacity: 6 kg



21YM location shown

## ACCESSORIES PACKS

	TRAVEL	STYLE	ADVENTURE BLACK
	08HME-MKT-TRA22	08HME-MKT-STY	08HME-MKT-ADTZB
50L Top Box with Electronic Opener & Inner Bag	•		
Aluminium Panel for Top Box	•		
Back Rest for Top Box	•		
Panniers Set with Key Systems	•		
Aluminium Panels for Panniers	•		
Rear Carrier	•		
Panniers Stay	•		
Console Bag	•		
Inner Bags for Panniers	•		
Grip Heaters	•		
Handlebar Holder		•	
Parking Lever		•	
Parking Lever Cover		•	
Lateral Covers		•	
Floor Panels		•	
Knuckle Guards Extensions Black *NH1*			•
Front Side Pipe			•
Front Led Fog Lights with Attachment			•
Legs Deflectors Set			•
Riders Steps Set			•



21YM location shown

## LUGGAGE



### PANNIERS SET WITH STAY

08ESY-MKT-PNA

Set of 2 panniers with a 26L capacity on the right side, and 33L on the left. The "Honda key system" provided allows to open and close the panniers by using the key of the scooter.

Rear carrier and Aluminium Panels sold separately. Maximum load capacity (each side): 6 kg



### 50L SMART TOPBOX

08ESY-MKT-STB50

50L Top Box with SMART Opener system allowing to open the lid without taking the key out the pocket. Can hold two helmets in. The built-in key cylinder can be used to lock the top box even when is removed from the carrier. A backrest is included to improve passenger comfort. Rear carrier and Aluminium Panel included.

Maximum load capacity: 6 kg

### ALUMINIUM PANELS FOR PANNIERS

08L80-MKT-D00

Give your panniers the final touch with these Aluminium design panels (panniers not included).

### ALUMINIUM PANEL FOR TOP BOX

08L83-MKT-D00

Enhance the toughness appearance of the 50L Top Box with this Aluminium design panel. Top Box not included.



### ALUMINIUM REAR CARRIER \*NH460M\*

08L74-MKT-D00ZC

Rear Carrier with grips that improve passenger comfort and ease the bike's handling. Suitable for all sizes of top boxes.

Maximum load capacity: 10 kg



### 38L TOP BOX WITH KEY SYSTEM

08ESY-MKT-TB350K

38L Top Box suitable for one helmet. The Honda one key system included allows to operate the top box by using the ignition key. Maximum load capacity: 6 kg. Top Box Lock & Key System Inner Cylinder included.

Rear Carrier, Backrest (08F00-MJP-G50) & Inner Bag (08L75-MJP-G51) not included.



### 50L TOP BOX INNER BAG

08L81-MKS-E00

Inner bag specifically designed to fit the 50L Top Box. As it is waterproof and equipped with straps, it can also be attached directly onto your X-ADV. Shoulder strap provided for easy carry.



### PANNIERS INNER BAGS SET

08L78-MKT-D00

Set of 2 inner bags matching the shape of the panniers new design. Available in black with a discrete Honda signature, these inner bags come with a shoulder strap for easy carry.



### 25L INNER BAG FOR TOP BOX

08L77-MKT-D00

The Top Box inner bag provides a 25L capacity storage and is easy to carry thanks to its shoulder strap. Featuring Honda Logo.



### CONSOLE BAG

08L79-MKT-D00

Perfectly fitting the space between the rider's knees, this Black 9L Console Bag is ideal for carrying your everyday essentials. Convenient slot available on the front for smartphone wires. Rain cover included.

Maximum load capacity: 2 kg

# COMFORT



## FRONT FOG LIGHTS WITH ATTACHMENTS

08ESY-MKT-FL21

These 2 additional LED headlights will increase your visibility and make you more noticeable to the surrounding traffic.

Operated with the left handlebar switch, a signal appears on the TFT monitor when the lights are switched on.

Must be mounted onto the Front Side Pipes (sold separately).



## LEG DEFLECTORS SET

08R71-MKT-D00

Featuring the X-ADV logo, the deflectors set improves the comfort by reducing the airflow around your waist and your thighs.



## HEATED GRIPS

08T71-MKT-D00

The 5 temperature levels of these slim heated grips are displayed on the TFT monitor. When the ignition is switched off, the last position is memorized. An integrated circuit protects the battery from draining.



## FRONT SIDE PIPES

08P70-MKH-D00

Set of silver Side Pipes that protect the scooter's body and provide a mount for the Front Fog Lights (sold separately).



## RIDER STEPS SET

08R72-MKT-D00

Improve your control while riding off-road and give your X-ADV the ultimate Adventure look with this Aluminium Rider Steps Set.



## KNUCKLE GUARD EXTENSIONS

08P72-MKS-E00ZC

Fitted to the standard knuckle guards, these extensions add some protection and comfort by reducing the airflow around the hands.

# DESIGN



## PARKING LEVER

08F70-MKT-D00

With its Anodized Black treatment, this Aluminium Parking Lever will make your X-ADV to stand out.

## PARKING LEVER COVER

08F72-MKT-D00

Matching the aluminium cover perfectly, this cover will give your X-ADV cockpit a distinctive touch.



## ALUMINIUM HANDLEBAR HOLDER

08F71-MKT-D00

Aluminium Handlebar holder featuring the X-ADV logo that reinforces the premium aspect of your X-ADV.



## LATERAL COVERS SET

08F75-MKT-D00

Stainless steel covers protect the body parts from damages and maximizing the premium appearance of X-ADV.



## FLOOR PANELS

08F70-MKH-D00

Made of stainless steel with anti-slip pads and featuring the X-ADV logo, this floor panels will add a classy touch to your X-ADV.



X-ADV

21YM location shown

**ADV 350**



**ACCESSORIES**  
**ADV 350**



**MUST HAVE**



**SMART TOP BOX**  
**08ESY-K2L-STB**

This 50L Top Box kit with the Honda SMART key system is delivered with all necessary accessories to set it up and complete the installation on the motorcycle.



## ACCESSORIES



### GRIP HEATERS KIT 08ESY-K2L-HG22

This pack contains all the necessary items to install the grip heaters on the motorcycle. The pack contains the grip heaters, the grip heater attachment and the hand grip cement.



### U-LOCK 120-340 08M53-KAZ-800

High security U-shaped lock made of hardened special steel. Anti-drill and anti-pick disc lock. The dimensions of this lock are 120-340. Can be carried easily in the receptacle under the seat.



### OUTDOOR CYCLE COVER XL 08P34-BC3-801

Protects paintwork against U.V. rays. Water-resistant breathable fabric that allows the bike to dry while covered. Rope to tighten the cover to avoid fluttering. Two holes in front lower area for easy introduction of U-lock.

**SH**  
350i



21YM location shown

## ACCESSORIES **SH350i**



## MUST HAVE



### **35L SMART KEY TOPBOX KIT**

**08HME-K53-DH0ZC / 08HME-K53-DH0ZD / 08HME-K53-DH0ZE / 08HME-K53-DH0ZF / 08HME-K53-DH0ZG / 08HME-K53-DH0ZK**

35L Top Box, colour matching the SH bodywork. This Top Box can store 1 helmet and features a backrest pad to improve the comfort of the pillion.

Thanks to the electronic opener, the rider can open the lid without taking the key out of the pocket.

Rear carrier included.

Maximum load capacity: 10 kg

Available in 6 colours:

- Mat Coal Black Metallic (08HME-K53-DH0ZC)
- Pearl Cool White (08HME-K53-DH0ZD)
- Crescent Blue Metallic (08HME-K53-DH0ZE)
- Mat Lucent Silver (08HME-K53-DH0ZF)
- Mat Ruthenium Silver Metallic (08HME-K53-DH0ZG)
- Black (08HME-K53-DH0ZK)



21YM location shown

## ACCESSORIES PACK

	CITY
35L Smart Top Box	•
Electronic Lid Opener	•
Windshield	•
Knuckle Guards Set	•
Grip Heaters Kit	•
<b>COLOURS AVAILABLE</b>	
Mat Coal Black Metallic	08HME-K53-CITYZC
Pearl Cool White	08HME-K53-CITYZD
Crescent Blue Metallic	08HME-K53-CITYZE
Mat Lucent Silver Metallic	08HME-K53-CITYZF
Mat Ruthenium Silver Metallic	08HME-K53-CITYZG
Black	08HME-K53-CITYZK

SH  
350i



21YM location shown

## ACCESSORIES



### 35L TOP BOX

08L70-KTW-B11YA / 08L70-KTW-B11YB / 08L70-KTW-B11YC /  
08L70-KTW-B11ZE / 08L70-KTW-B11ZN / 08L70-KTW-B11ZW

35L Top Box suitable for one helmet. Comfort pad, lock and key system are included.

Maximum load capacity: 10 kg

Available in 6 colours:

- Crescent Blue Metallic (Crescent Blue Metallic)
- Mat Lucent Silver Metallic (08L70-KTW-B11YB)
- Mat Coal Black Metallic (08L70-KTW-B11YC)
- Pearl Cool White (08L70-KTW-B11ZE)
- Mat Ruthenium Silver Metallic (08L70-KTW-B11ZN)
- Black (08L70-KTW-B11ZW)



### 35L TOP BOX INNER BAG

08L09-MGS-D30

Black nylon bag with silver Honda logo on front pocket. Expandable from 15 to 25L. The front pocket can contain an A4-size file. Comes with adjustable shoulder belt and carrying handle.



### WINDSHIELD

08P70-K1W-D20ZB

Improve your comfort with this 46 cm high windshield perfectly adapted to SH350i design.



### CLEAR KNUCKLE GUARDS SET

08P70-K0R-D20

Pair of clear Knuckle Guards perfectly integrated to maximize the rider protection.

Easy to install thanks to the ready-to-use holes of the bodywork.

### MOTORCYCLE COVER

08P34-BC3-801

Protects paintwork against U.V. rays. Water-resistant breathable fabric that allows the bike to dry while covered.

Rope to tighten the cover to avoid fluttering. Two holes in front lower area for easy introduction of U-lock.



### U-LOCK L-TYPE

08M53-MEE-800

Tamper-resistant barrel key U-lock.



20YM location shown

## ACCESSORIES SH125i / SH150i



## MUST HAVE



### 35L SMART TOP BOX

08L72-K53-DHOZA, C or N  
08L72-K0R-DBOZC or D

35-litres Top Box with a backrest that can store 1 helmet. Must be equipped with the electronic opener (sold separately).

Available in 4 different colours to match your SH125 or SH150 bodywork:

- 08L72-K53-DH0
- Pearl Splendor Red (ZA)
  - Pearl Nightstar Black (ZC)
  - Timeless Gray Metallic (ZN)

- 08L72-K0R-DB0
- Mat Rock Gray (ZC)
  - Mat Pearl Cool White (ZD)



20YM location shown

## ACCESSORIES



### CLEAR WINDSHIELD

08R70-K0R-D20ZA

Specifically designed windshield made of a 2.5mm thick heavy-duty polycarbonate. Elegant, resistant and flexible, this windshield guarantees a clear visual field and a great upper body protection for the rider, without impairing the maneuverability of the scooter.



### CLEAR KNUCKLE GUARDS SET

08P70-K0R-D20

Pair of clear Knuckle Guards perfectly integrated to maximize the rider protection, and easy to install thanks to the ready-to-use holes of the bodywork.



### 35L TOP BOX INNER BAG

08L09-M6S-D30

Black nylon bag with silver Honda logo on front pocket. Expandable from 15 to 25L. The front pocket can contain an A4-size file. Comes with adjustable shoulder belt and carrying handle.



### 35L TOP BOX

08L70-K77-D012C / 08L70-K77-D012H / 08L70-K77-D012L / 08L70-K77-D012M / 08L70-K77-D012N / 08L70-K77-D012P

35-litres plastic Top Box with a backrest that can store 1 helmet.

Available in 6 colours, matching the motorcycle bodywork:

- Pearl Nighstar Black (08L70-K77-D012C)
- Mat Pearl Cool White (08L70-K77-D012H)
- Mat Pearl Pacific Blue (08L70-K77-D012L)
- Pearl Falcon Grey (08L70-K77-D012M)
- Hyper Red (08L70-K77-D012N)
- Mat Coal Black Metallic (08L70-K77-D012P)

### OUTDOOR CYCLE COVER

08P34-BC3-8010

Protects paintwork against U.V. rays. Waterresistant breathable fabric that allows the bike to dry while covered. Rope to tighten the cover to avoid fluttering. Two holes in front lower area for easy introduction of U-lock.

### U-LOCK 105-245

08M53-MEE-800

Tamper-resistant barrel key U-lock.

PCX



21YM location shown

## ACCESSORIES PCX125



## MUST HAVE



### 35L SMART TOP BOX 08ESY-K1Z-TB21

35-litres Top Box that can store 1 helmet. Equipped with an electronic Opener allowing the rider to open the lid without taking the key out of the pocket.



21YM location shown

## PACK

	<b>CITY</b> 08HME-K1Z-TO21
35L Smart Top Box	•
Electronic Lid Opener	•
Top Box Base	•
Windshield	•
Grip Heaters with attachment	•

## ACCESSORIES



### **35L TOP BOX KIT** 08ESY-K1Z-35TB

35-litres plastic Top Box with a backrest that can store 1 helmet.  
Top box base and key system included.



### **WINDSCREEN** 08R70-K1Y-D10

The Windscreen improves the comfort of the rider and adds the final touch to the design of the PCX125.

### **OUTDOOR CYCLE COVER** 08P34-BC2-801

This Outdoor Cycle Cover protects the paintwork against U.V. rays. Its water-resistant breathable fabric allows the bike to dry while covered and is equipped with a rope to avoid fluttering.

**SH** mode



## ACCESSORIES **SH MODE**



## LUGGAGE



### **35L TOP BOX** 08ESY-K1N-35TB

35-litres Top Box that can store 1 helmet.  
The top box base and the key system are included.

**VISION**



Action photos show 21YM

## ACCESSORIES **VISION**



## LUGGAGE



### **35L TOP BOX** 08ESY-K2C-35TB

35-litres Top Box that can store 1 helmet.  
The top box base and the key system are included.

*Super  
Cub*



## ACCESSORIES SUPER CUB



## LUGGAGE



### REAR CARRIER 08L70-K06-910

Chrome-plated high-quality Rear Carrier providing a secure storage space for luggage.



The specific details of this brochure do not apply to any particular product supplied or offered for sale. Manufacturers reserve the right to vary specifications, including colours, with or without notice at such times in such manner as deemed appropriate. Major as well as minor changes may be involved. Every effort, however, is made to ensure the accuracy of the particulars contained in this brochure. Consult your Dealer for details regarding the specifications of any featured product. This publication shall not constitute – under any circumstances whatsoever – an offer by the Company to any individual. All sales are made by the Distributor or Dealer subject to and with the benefit of the standard Conditions of Sale and Warranty provided by the Distributor or Dealer, copies of which may be obtained upon request. While efforts are made to ensure specification accuracy, brochures are prepared and printed several months in advance of distribution and consequently cannot always immediately reflect either changes in specification or in some isolated cases the provision of a particular feature. Customers are always advised to discuss specific details with the supplying Dealer, especially if a selection is dependent upon one of the features advertised. Please contact your local dealer for information and specifications. Please note that the fuel consumption figures provided are results obtained by Honda under standardised testing conditions prescribed by WMTC. Tests are conducted on a rolling road using a standard version of the vehicle with only one rider and no additional optional equipment. Actual fuel consumption may vary depending on how you ride, how you maintain your vehicle, weather, road conditions, tyre pressure, installation of accessories, cargo, rider and passenger weight, and other factors. You accept that if you do go ahead and make a purchase or enter into any kind of transaction, whether for payment or not, you did so entirely in reliance on your own skill and judgement and not on that of anyone else.

**RIDE WITH STYLE** Read the owner's manual thoroughly. Get to know your machine and its capabilities. Concentration assists anticipation. Observe other road users' movements. Brake in plenty of time. Always wear a helmet and quality kit, ride fit and NEVER after drinking alcohol. Good roadcraft and courtesy identify the skilled and stylish rider. Honda endorse the law that all helmet visors must comply with BS 4110. Visors that transmit less than 50% of visible light cannot legally be used on the road.

#### CUSTOMIZED PARTS IMPORTANT NOTICE

Please read carefully before purchasing any Customized Parts. The manufacturer and distributor of each Customized Part guarantees and warrants the function, performance, and quality as detailed with the Customized Part. Customized Parts must be correctly attached or fitted in compliance with the laws and regulations.

It is the responsibility of the vehicle owner/user to ensure the Customized Parts are correctly attached or fitted to help ensure the safe use of the vehicle, the safety of the vehicle user and others.

You must read carefully and follow the instructions in the Instruction Manual/Leaflet attaching/fitting as instructed. Please make sure to conduct an inspection prior to riding the vehicle, in addition to regular maintenance checks.

If you have any queries about the attachment/fitting, please contact the dealership where you purchased the Customized Parts.

If you experience any abnormalities during the ride, please stop immediately and arrange for an inspection at a dealership.

In any absence of any negligence or breach of duty by us, the use of such Customized Parts is at your own risk. This will not affect your statutory rights.

- Prices are Suggested Retail Price for reference only. Actual sales prices are defined at each dealership.
- Prices do not include the vehicle price, or service rate to attach the option parts etc. These will be charged separately.
- The specifications, price etc. of Customized Parts are liable to change without

advance notice. Customized Parts may require time for delivery or could be discontinued without advance notice.

- You must read carefully the Instructions and Customized Parts must be attached/fitted correctly as instructed to vehicles and parts on the vehicle as specified in the instructions, and should not be applied anywhere that is not specified.
- To attach/fit the Customized Parts, special treatment (e.g. wiring) may be necessary. Please contact the dealership should you have any queries.
- We cannot guarantee that it is possible to attach/fit a combination of various Customized Parts. Such attachments/fittings may not be possible, or require an extensive level of treatments.
- The Customized Parts are not Honda Genuine parts, therefore although some Customized Parts may be similar to Honda Genuine Parts the Durability, Functionality, Quality etc. may differ.
- By attaching the Customized Parts, there is a risk that engine characteristics or drivability may be affected.
- Certain Customized Parts may require to be attached/fitted at a certified factory or workshop, in this instance we strongly recommend attachment/fitting at a certified factory or workshop. Please contact the dealership for the certified factory or workshop details.
- Any fitting time stated is for reference only. For details as to fitting time, please contact the dealership.
- The exact color of the Customized Parts shown in photos may not match the actual color of the Customized Parts.

## Honda Motor Europe – Motorcycles

Cain Road, Bracknell, Berkshire, RG12 1HL England

insert local URL here



Please don't bin me.  
Pass me on to a  
friend or recycle me.

Honda Motor Europe sources  
paper responsibly from  
manufacturers within the EU.



BLUE SKIES FOR  
OUR CHILDREN

# SCOOTERS 2023



# Find your freedom

Practical, stylish, affordable and empowering lives in any environment. Honda Scooters are innovative machines designed to suit you, your lifestyle and your budget.



## CONTENTS

FORZA 750 <b>UPDATED</b>	04
FORZA 350 <b>UPDATED</b>	06
FORZA 125 <b>UPDATED</b>	08
X-ADV <b>UPDATED</b>	10
ADV 350	12
SH350i <b>UPDATED</b>	14
SH125i / SH150i <b>UPDATED</b>	16
SH MODE 125	18
SUPER CUB C125	20
PCX 125 <b>UPDATED</b>	22
VISION 110 <b>UPDATED</b>	24
EM1 e:	26
SPECIFICATIONS	28
HONDA TECHNOLOGY	32





**FORZA 750**



ENGINE

**745 cc** twyn-cylinder

TRANSMISSION

**DCT** Dual Clutch Transmission

TECHNOLOGY

**Honda Smartphone Voice Control system**

## Bold Move

Wherever you need to be, in or out of the city, the Forza 750 combines a smart, tight form with true GT-luxe comfort and practicality. The sharp lines of its front fairing and screen ensure a cocoon of still air, the seat envelops and supports beautifully, but even with 22L of hidden storage, the tail unit is tightly wrapped. There's room for a full-face helmet, and a built-in USB Type-C socket for charging your device.

The Honda Smartphone Voice Control system (HSVCs) links to your device for easy management of navigation, calls, messages and music and is displayed clearly on the right side of the TFT screen. Operated easily and safely via voice or the left handlebar switch. A Smart Key operates the keyless ignition system, steering lock, fuel cap and seat, along with the optional Smart Top Box accessory. All lighting is super-efficient LED for a distinct road presence giving high visibility to other road users.

## Key Features

- 4 RIDING MODES
- 3-LEVEL HONDA SELECTABLE TORQUE CONTROL (HSTC)
- 69NM PEAK TORQUE
- 41MM CARTRIDGE-STYLE UP SIDE DOWN (USD) FORKS
- DUAL, RADIAL-MOUNT FOUR-PISTON BRAKE CALIPERS
- 22L UNDERSEAT STORAGE
- SMART KEY OPERATION
- 35KW A2 LICENCE OPTION

Find out more at [insert local URL](#)

Under the Forza 750's gorgeous skin there's some serious hardware. The 745cc, 8-valve parallel twin-cylinder engine makes 43.1kW peak power, with an impressive 69Nm of torque; a 35kW A2 licence conversion is also available. Three default riding modes, STANDARD, SPORT and RAIN balance engine power, engine braking and Dual Clutch Transmission (DCT) shifting schedule. An additional USER mode custom builds between all of the parameters. A tubular steel diamond frame provides rugged strength and adjustable, 41mm cartridge-style USD (Up Side Down) forks provide superlative suspension control. A 17-inch cast aluminium front wheel is matched to a 15-inch rear for stability, and dual radial-mount four-piston front brake calipers bite 315mm discs.

We've made it easy to set up the Forza 750 as the ultimate riding companion with tailored TRAVEL, URBAN and STYLE accessory packs ready to go. Plus the Forza 750 is now available in 4 new colour updates for 2023.



## FORZA 350

MAX POWER OUTPUT

**21.5 kW**

TECHNOLOGY

**Honda Smartphone Voice Control system**

UNDERSEAT STORAGE

**2** Full-face helmets

### Key Features

- LCD DASH
- SMART KEY OPERATION
- USB TYPE-C CHARGING SOCKET
- 33MM TELESCOPIC FORKS
- ONE-PIECE ALUMINIUM SWINGARM
- LED HEADLIGHT
- DISC BRAKES & 2 CHANNEL ABS SYSTEM

Find out more at [insert local URL](#)



## Moving Forward

The Forza 350 sets the bar high. Taking inspiration from big brother Forza 750 the sleek new fairing and headlights are a fast-moving sculpture of aerodynamic efficiency and style. Its eSP+ SOHC liquid-cooled engine delivers 21.5kW, for fast acceleration to keep ahead of downtown traffic and speed out on the highway. But, even with such excellent performance, the EURO5-compliant engine maintains the Forza reputation for fuel efficiency – it'll go as far as 350km on a full tank. It's also equipped with Honda Selectable Torque Control (HSTC), which constantly monitors rear-wheel grip, and manages engine torque accordingly.

The smartly redesigned front fairing and air scoop combine neatly to manage airflow and reduce rider back pressure at speed. The electrically operated windscreen adjusts easily, through a 180mm range. There's also the excellent, secure storage capacity that's essential for city life – enough space for up to two full-face helmets – and a handy USB Type-C socket in the glovebox to charge up a mobile device.

An attractive new instrument panel displays all information clearly at a glance, night or day. There's also the ability to link to many of your device's features via the Honda Smartphone Voice Control system. Additionally, seamless Smart Key operation ensures total ease, and can operate the optional Smart Top Box. The LED headlights and taillight are new and, just like the LED indicators designed as an integral part of the Forza 350's sculpted look. But this is not just about style; they ensure a big presence on the road at night, improving visibility.



Model shown is Forza 125 Special Edition, Mat Cynos Gray

## FORZA 125

### ENGINE

**eSP+** Enhanced Smart Power

### TECHNOLOGY

**Smart Key**

### UNDERSEAT STORAGE

**2** Full-face helmets

## Key Features

- IMPROVED LCD DASH
- HONDA SELECTABLE TORQUE CONTROL
- IDLING STOP TECHNOLOGY
- ADJUSTABLE ELECTRIC SCREEN
- USB TYPE-C CHARGING SOCKET
- 33MM TELESCOPIC FORKS
- DISC BRAKES & 2 CHANNEL ABS SYSTEM

Find out more at [insert local URL](#)



## Make more of life

We introduced the Forza 125 in 2015 and it's been a class leader ever since, thanks to compact dimensions and strong engine performance. Beautifully sleek, the re-styled front fairing and headlights – inspired by the Forza 750 – slice through air efficiently, with aerodynamics that reduce rider back pressure at speed. The electric screen operates through 180mm for greater wind protection and less wind noise when raised or, when lowered, increased freedom around town. In the glovebox, you'll find a USB Type-C socket to keep a mobile device charged.

The liquid-cooled, 4V enhanced Smart Power (eSP+) engine is EURO5 compliant and equipped with Honda Selectable Torque Control (HSTC) to monitor and maintain rear tyre traction. Idling Stop technology increases fuel efficiency (a 298-mile tank range is possible) and reduces emissions, by cutting the engine after 3 seconds at standstill, and silently starting it again with a twist of throttle. Smart Key operation is easy – put it in a pocket and keep it there. It'll start the engine and open the seat, locking it when left, and also operates the optional Smart Top Box. There's room for two helmets under the seat and an attractive new dash. Full LED lighting ensures distinct presence and visibility that gets you noticed.

Sure, the Forza 125 stands out wherever it goes. But, if you want even more attention, the new Forza 125 Special Edition – finished in stealth Mat Cynos Grey Metallic paint with contrasting metallic red wheels, red highlights on the dash and embossed seat with red stitch detailing – adds an extra level of sporting desirability.



Location photos show 22YM



ENGINE

**745** cc twin-cylinder

MAX POWER OUTPUT

**43.1** kW

MAX TORQUE

**69** Nm

## Key Features

- 4 DEFAULT RIDING MODES AND USER CUSTOMISATION
- 3-LEVEL HONDA SELECTABLE TORQUE CONTROL (HSTC)
- SIX-SPEED DUAL CLUTCH TRANSMISSION (DCT)
- 41MM CARTRIDGE-STYLE UP SIDE DOWN (USD) FORKS
- DUAL, RADIAL-MOUNT FOUR-PISTON BRAKE CALIPERS
- LED HEADLIGHTS WITH DRL TECHNOLOGY
- SMART KEY OPERATION
- 35KW A2 LICENCE OPTION

Find out more at [insert local URL](#)



## Infinite adventure around every corner

Combining the capabilities and performance of an adventure motorcycle, with the comfort, convenience and commuting ability of a large-capacity scooter, the X-ADV is a two-wheeled SUV that defies convention. And as a premium urban explorer, capable of going from city block to off-road trail in a heartbeat, it turns the daily commute, and every single ride, into a unique experience.

The lightweight frame design and contoured seat make ground reach easy, while tough bodywork defines a rugged style the X-ADV has made its own. It also hides ample storage space and a USB Type-C socket. Sharp, dual front headlights feature highly visible Daytime Running Light (DRL) technology, while the full-colour TFT screen offers intuitive control. You can also link to many smartphone functions, such as navigation, calls, messages and music, via the Honda Smartphone Voice Control system.

There's a punchy 69Nm torque on tap from the 745cc parallel twin-cylinder engine, with an easy A2 licence conversion. Throttle By Wire (TBW) control and four riding modes (STANDARD, RAIN, SPORT and GRAVEL) optimise performance to suit conditions and terrain. With the USER mode you can customise Engine Power, DCT (Dual Clutch Transmission) shifting schedule, HSTC (Honda Selectable Torque Control) and ABS level.

We've made it easy to prepare the X-ADV for whatever you have in store, with tailored accessory packs: ADVENTURE, TRAVEL and STYLE good to go. For 2023 we see a new special edition Shasta White version available. (shown in packshot above)



## ADV350

MAX POWER

**21.5 kW**

MAX TORQUE

**31.5 Nm**

TECHNOLOGY

**Honda Smartphone  
Voice Control system**

### Key Features

- 125MM FRONT AND 130MM REAR SUSPENSION TRAVEL
- 145MM GROUND CLEARANCE
- ADJUSTABLE SCREEN
- UNDERSEAT STORAGE FOR 2 FULL-FACE HELMETS
- GLOVEBOX WITH USB TYPE-C SOCKET
- 2-LEVEL HONDA SELECTABLE TORQUE CONTROL (HSTC)
- NEGATIVE LCD DISPLAY
- SMART KEY OPERATION

Find out more at [insert local URL](#)



## Adventure spirit, urban style

Take the very best scooter technology we have. Add a large dash of adventure DNA from our ground-breaking X-ADV, and you arrive somewhere new – the ADV350. Weighing just 186kg, with a contoured seat set 795mm high for easy ground reach, it's built with fresh styling and accompanied by all the sophistication needed to make urban travel effortless. For dealing with less than perfect surfaces, it has the supple control of high-quality, long-travel motorcycle-style Upside Down forks (USD) and twin, remote reservoir rear shock absorbers with triple-rate springs. There's also extra ground clearance, while block-pattern tyres cover light off-road riding and unpaved tracks easily.

But we haven't forgotten comfort and practicality. There's enough underseat storage for two full-face helmets, plus a glovebox with USB Type-C socket. Ready to go? Put the Smart Key in your pocket, and ride. It arms the ignition system, opens the seat and also operates the (optional) Smart Top Box. For versatility and comfort the screen adjusts in 4 stages, height and angle, through 133mm. And keep in touch while you ride; the negative LCD dash features the Honda Smartphone Voice Control system\* (HSVCs) which links to your device for making calls or listening to music.

The 330cc, enhanced Smart Power+ (eSP+) engine delivers traffic-beating acceleration and plenty of power for longer-range highway commutes. Because riding conditions can change quickly, 2-level Honda Selectable Torque Control (HSTC) manages rear wheel traction for the confidence to ride on. Fuel economy of 30km/l (WMTC mode) and 11.7L fuel tank deliver a potential range of 340km.



Location photos show 21YM

#### ENGINE

**350 eSP+** Enhanced Smart Power

#### UNDERSEAT STORAGE

**1** Full-face helmet

#### TECHNOLOGY

**Honda Selectable Torque Control**

### Key Features

- 21.6KW PEAK POWER
- SMART KEY OPERATION
- USB TYPE-C CHARGING SOCKET
- LCD DASH
- FULL LED LIGHTING
- 16-INCH FRONT AND REAR WHEELS
- DISC BRAKES AND ABS
- 35MM TELESCOPIC FRONT FORKS

Find out more at [insert local URL](#)

## 350 performance timeless style

The SH350i defines our ultimate SH. Sleek, slim bodywork wraps the tubular steel frame beneath and supports the easy-to-use, practical flat floor that sets all SH scooters apart. The riding position is comfortable, upright, relaxed and suitable for a variety of rider heights. 16-inch front and rear wheels roll smoothly over rough tarmac and provide stability at higher speeds. Supple suspension – 35mm telescopic front forks and dual rear shocks – is matched to ABS-controlled disc braking front and rear.

Its strong, eSP+ SOHC 4V, liquid-cooled engine helps you get around town and go faster and further out on the open highway. Peak output is 21.6kW in total with top speed of 134km/h, and 0-200m covered in just 10.2s. Honda Selectable Torque Control (HSTC) monitors and manages rear tyre grip, giving you extra confidence to ride in all conditions. And the SH350i engine has full EURO5 compliance.

Sophisticated design details are everywhere. Convenience is provided by the Smart Key, which can be stored in a pocket and operates the ignition and seat, as well as the optional Smart Top Box. There's room for a full-face helmet under the comfortable seat and a USB Type-C charging socket ready to plug straight into. All lighting, including indicators, is crisply efficient LED, while the attractive LCD dash provides clearly displayed information.

The SH350 will be available in three updated colours for 2023.



UNDERSEAT STORAGE

**1** Full-face helmet

ENGINE

**eSP+** Enhanced Smart Power

TECHNOLOGY

**HSTC**

**Key Features**

- SMART KEY
- ANTI-LOCK BRAKING SYSTEM
- EURO5
- IDLING STOP TECHNOLOGY
- V-MATIC TRANSMISSION
- USB TYPE-C CHARGING SOCKET
- HONDA SELECTABLE TORQUE CONTROL
- 16 INCH WHEELS

Find out more at [insert local URL](#)

**You always notice the top of the class**

Living in the city, we know your life moves fast. You need to stay ahead. By instinct and design, so do our beautiful SH125i and SH150i. Both stay out front thanks to smooth, sculpted bodywork wrapping powerful and fuel-efficient, Idling Stop-equipped liquid-cooled eSP+ EURO5 compliant engines. And the peace of mind of Honda Selectable Torque Control (HSTC) to manage rear tyre grip in all conditions.

There's also plenty of storage, enough for a full-face helmet with room to spare. The rear shock absorbers and swingarm are designed to deliver a smooth ride, alongside the stability delivered by front and rear 16-inch wheels.

The SH signature flat floor offers real convenience day-to-day, as does the integrated USB charging socket. Full LED lighting and a super-sharp LCD dash are premium touches. And for simply-go ease, the Smart Key operates the ignition, seat, filler cap and steering lock from your pocket, in addition to the optional Smart Top Box. It's in our DNA to improve things. It's what we do. And we've always engineered the SH125i and SH150i to be the very best they can be. Which, if we're honest, we think you'll notice.

The SH125 and 150 will be available in 4 updated colours for 2023.



**SH mode**

ENGINE  
**eSP+** Engine

MAX TORQUE  
**12.1** Nm

UNDERSEAT STORAGE  
**1** Full-face helmet

## Key Features

- SMART KEY OPERATION
- IDLING STOP TECHNOLOGY
- USB TYPE-C CHARGING SOCKET
- LCD DASH
- 18.5L STORAGE AREA
- ENHANCED SMART ARCHITECTURE FRAME (ESAF)
- 16-INCH FRONT AND 14-INCH REAR WHEELS
- DISC FRONT BRAKE

Find out more at [insert local URL](#)



## Rediscover the city

Based on the hugely popular SH125i, the compact size, smart bodywork and low running costs of the SH Mode 125 make it a perfect partner for busy urban life. And, because it's a member of our SH family, beautiful form also incorporates a great deal of practical functionality. A spacious flat floor features spacious leg room; with an 18.5L storage area, there's room for a full-face helmet under the seat (and more) and a handy glovebox with USB Type-C socket in the fairing. The headlight is smart and efficient LED.

This is a scooter built for day-to-day convenience, so here's one less thing to think about during a busy day; keep the Smart Key in a pocket, and ride. It will also lock the seat when you walk away. For light, confident handling, the eSAF steel frame, supple suspension and cast aluminium, 16-inch front and 14-inch rear wheels – with fuel-saving tyres – combine to smooth out rough city tarmac.

The SH Mode also features an easy to use eSP+ water-cooled engine. Just wind on the throttle, and go. This is an economical, EURO5 powerplant designed for everybody to enjoy with a flat, linear response that's smooth and efficient.



# Super Cub

## TRANSMISSION

**4 Speed gearbox**  
and automatic centrifugal clutch

## ENGINE

**Air-cooled SOHC 2-valve**

## TECHNOLOGY

**Smart Key**

## Key Features

- 7.2 KW PEAK POWER
- PILLION SEAT AND FOOTPEGS STANDARD
- TELESCOPIC FORKS WITH NEW SPRINGS
- DUAL REAR SHOCKS WITH NEW SPRINGS
- FULL LED LIGHTING
- 17-INCH CAST ALUMINIUM WHEELS
- TUBELESS TYRES
- 220MM FRONT DISC BRAKE

Find out more at [insert local URL](#)



## A world of motion

Easy, simple, stylish. And the product of one engineer's dream; it was Soichiro Honda's burning desire to bring the joy of mobility to peoples' lives. His creation, the Super Cub, has stood the test of time; over the last 60 years, over 100 million have been made. Its useful genius is why you'll find it on European streets today – the Super Cub C125 is a stylish, contemporary evolution of a revolutionary machine that's worked so hard for so many, for so long.

Super Cub appeal has never gone out of fashion. With the credibility of decades, it has set the bar in terms of usability, economy and downright durability; oozing retro style, authentic to every nut and bolt – yet thoroughly modern in every detail – it's a scooter that's as useful as it ever was. Now, maybe even more so, with a brand-new, air-cooled engine giving more power and fuel economy plus updated, smooth-riding suspension.

As always, the Super Cub C125 is built around its rider. An upright, straight-backed riding position gives excellent all-round visibility, the seat uses high-density urethane foam for comfort, and the handlebars are rubber-mounted. A EURO5-compliant engine powers the Super Cub C125; air-cooled, two-valve and SOHC, it is designed tough, easy-to-use and fuel efficient. There's peak power of 7.2kW and amazing fuel economy – with a range of well over 200km possible from the 3.7L fuel tank. In classic Cub tradition, the 4-speed gearbox is operated via an automatic centrifugal clutch, so no need for a clutch lever. The tubular steel frame, telescopic forks, twin rear shocks, cast aluminium, 17-inch wheels and tubeless tyres ensure dependable handling. Full LED lighting and Honda Smart Key are premium touches and, for flexibility, the Super Cub C125 comes with a pillion seat and footpegs ready mounted.



**PCX**



Location photos show 21YM

TECHNOLOGY

**Smart Key**

UNDERSEAT STORAGE

**30.4 L**

FUEL CONSUMPTION

**2.1 L/100 km**

## Key Features

- ENHANCED SMART POWER PLUS (ESP+) ENGINE
- IDLING STOP TECHNOLOGY
- LCD DISPLAY
- HONDA SELECTABLE TORQUE CONTROL
- FULL LED LIGHTING
- NEW DUPLEX STEEL FRAME
- LONGER TRAVEL REAR SHOCK ABSORBERS
- USB TYPE-C CHARGING SOCKET

Find out more at [insert local URL](#)

## The best view of the city

We should explain the philosophy behind the PCX 125 – and what's made it one of Europe's favourite scooters for over a decade. Personal Comfort with an 'X' level – PCX – is provided by the sit-in riding position, underseat storage for a full-face helmet and all-round high build quality. There's no waiting around for an expensive taxi or delayed public transport. Just hit the start button and go.

This is a scooter designed to get you where you want to be in the city and look good as it does. The PCX125's stunning style has always grabbed attention but hidden away beneath the swooping bodywork are details that make life that much easier. The ignition and seat, as well as the optional Smart Top Box are operated by a Smart Key – just put the key in your pocket and ride. Total volume under the seat is 30.4L and there's also a USB Type-C socket in the glovebox, to keep your device topped up.

A powerful eSP+ SOHC engine delivers fast acceleration and a useful top speed. With an ACG generator, Idling Stop technology and EURO5 compliance, it's clean and fuel-efficient, too. And, for extra riding confidence, Honda Selectable Torque Control (HSTC) monitors and manages rear tyre grip at all times. The duplex steel cradle frame is designed to deliver the durability needed for the rigours of urban life, without losing the in-town manoeuvrability the PCX125 has always been famous for. Long travel rear shock absorbers enhance comfort, while both wheels employ a stylish design that complements the bodywork.

2023 will see the PCX125 available in 4 updated colours.



Location photos show 21YM

ENGINE  
**eSP**

TECHNOLOGY  
**Smart Key**

FUEL CONSUMPTION  
**1.8 L/100 km**

### Key Features

- 9NM PEAK TORQUE
- IDLING STOP TECHNOLOGY
- LCD DASH
- 17.7L UNDERSEAT STORAGE
- ENHANCED SMART ARCHITECTURE FRAME (ESAF)
- 16-INCH FRONT AND 14-INCH REAR WHEELS
- DISC FRONT BRAKE

Find out more at [insert local URL](#)

## Enjoy the city

We get it. Choosing a scooter on a budget can be a little confusing. So we've made it easy and engineered the Vision 110 to give you everything you need, and more. It wears a modern, stylish design that includes an LCD dash and the compact dimensions that make riding and parking in a busy city stress-free. Under-seat storage holds a full-face helmet and other items, and it doesn't get much more convenient than this; put the new Smart Key in your pocket and keep it there – it will start the engine and also lock the seat automatically.

The efficient, air-cooled enhanced Smart Power (eSP) fuel-injected engine is built light and tough. It's very easy to use, with crisp response – perfect for the urban rider – with great fuel economy thanks to low-friction technologies and Idling Stop. Constructed from laser-welded pressed steel, the lightweight enhanced Smart Architecture Frame (eSAF) offers ride comfort and light handling, matched to the confident stability added by the large-diameter, 16-inch wheels.

While it may represent straightforward, simple transport, the Vision 110 is so much more when it comes to all-round performance. And it has the build quality and many of the features you'd expect to find on a premium Honda scooter, at a price point that's hard to ignore.

2 updated colour schemes are available for the Vision 110 for 2023.



## EM1 e:

**The EM1 e: is the first Honda EV two wheeler to head to Europe.**

Aimed squarely at a young demographic, the EM1 e: offers easy, fun urban riding. Designed for short hops around town and to make journeys to college or work efficient, quiet and emission-free, the EM1 e: syncs neatly with modern expectations and lifestyles.

For maximum convenience, the EM1 e: is powered by the Honda Mobile Power Pack e:, a highly durable, long-lasting swappable battery developed in-house by Honda, which allows for quick and easy removal for charging at home.

The EM1 e: is compact in form, flat-floored, with a smooth styling that marks it out as something different and unique, as befits the first electric two wheeler to carry the Honda name.



## Specifications

### Engine

	FORZA 750	FORZA 350
Engine Type	Liquid-cooled 4-stroke 8-valve, SOHC parallel 2-cylinder	eSP+ liquid-cooled 4-stroke SOHC single
Engine Displacement	745 cc	330 cc
Max. Power Output	43.1 kW @ 6,750 rpm (35 kW @ 6,000 rpm)	21.5 kW @ 7,500 rpm
Max. Torque	69 Nm @ 4,750 rpm (65 Nm @ 4,000 rpm)	31.5 Nm @ 5,250 rpm
Fuel Consumption/Emissions	3.6 l/100 km 85 g/km	3.4 l/100 km / 79 g/km

### Chassis, Dimensions and Weight

	FORZA 750	FORZA 350
Length x Width x Height (mm)	2,200 x 790 x 1,485	2,147 x 754 x 1,507
Seat Height (mm)	790	780
Wheelbase (mm)	1,580	1,510
Kerb Weight (kg)	235	184

### Wheels, Suspension and Brakes

Brakes (Front/Rear)	310 mm double hydraulic disc with radial 4 piston caliper / 240 mm single hydraulic disc with 2 piston caliper (2 Channel ABS System Type)	256 mm disc / 240 mm disc (2 Channel ABS System Type)
Tyres (Front/Rear)	120/70 R17 / 160/60 R15	120/70 R15 / 140/70 R14
Suspension Front	41 mm Upside Down Fork	33 mm Telescopic
Suspension Rear	Monoshock damper, Pro-Link swingarm	Twin Shock



**New 2023 Colour**  
Graphite Black



**New 2023 Colour**  
Mat Beta Silver Metallic



**New 2023 Colour**  
Mat Cynos Gray Metallic



**New 2023 Colour**  
Mat Pearl Pacific Blue



**New 2023 Colour**  
Mat Jeans Blue Metallic



**New 2023 Colour**  
Candy Chromosphere Red



**New 2023 Colour**  
Mat Robust Gray Metallic



**New 2023 Colour**  
Pearl Falcon Gray



**New 2023 Colour**  
Pearl Siena Red

## FORZA 125

eSP+ liquid-cooled 4-stroke SOHC

124.9 cc

10.7 kW @ 8,750 rpm

12.3 Nm @ 6,500 rpm

2.4 l/100 km / 54 g/kg

2,145 x 750 x 1,500

780

1,505

162

256 mm disc / 240 mm disc (2 Channel ABS System Type)

120/70 R15 / 140/70 R14

33 mm Telescopic

Twin Shock



**New 2023 Colour**  
Pearl Falcon Gray



**New 2023 Colour**  
Mat Cynos Gray Metallic



**New 2023 Colour**  
Pearl Mat Pearl Pacific Blue



**New 2023 Colour**  
Mat Carnelian Red Metallic



**New 2023 Special Edition**  
Mat Cynos Gray Metallic

## X-ADV

Liquid-cooled 4-stroke 8-valve, SOHC parallel 2-cylinder

745 cc

43.1 kW @ 6,750 rpm (35 kW / 6,000 rpm)

69 Nm @ 4,750 rpm (65 Nm @ 4,000 rpm)

3.6 l/100 km / 85 g/kg

2,215 x 940 x 1,370

820

1,590

236

296 mm double hydraulic disc with radial 4 piston caliper / 240 mm single hydraulic disc with 1 piston caliper (2 Channel ABS System Type)

120/70 R17 / 160/60 R15

41 mm Upside Down

Monoshock damper, Pro-Link swingarm



**Mat Balistic Black Metallic**



**Mat Iridium Grey Metallic**



**Pearl Deep Mud Grey**



**New 2023 Colour**  
Xadv Shashta White

## ADV 350

Liquid-cooled 4-stroke SOHC single

330 cc

21.5 kW @ 7,500 rpm

31.5 Nm @ 5,250 rpm

3.4 l/100 km / 79 g/kg

2,200 x 895 x 1,295

795

1,520

186

256 mm single disc / 240 mm single disc (2 Channel ABS System)

120/70 R15MC / 140/70 R14MC

Upside down fork

Twin shock



**Mat Cynos Gray Metallic**



**Pearl Deep Mud Grey**



**Mat Carnelian Red Metallic**

## Specifications

### Engine

	SH 350i	SH 125i	SH 150i
Engine Type	eSP+ liquid-cooled 4-stroke SOHC single	eSP+ liquid-cooled 4-stroke SOHC single	eSP+ liquid-cooled 4-stroke SOHC single
Engine Displacement	330 cc	124.5 cc	157 cc
Max. Power Output	21.6 kW @ 7,500 rpm	9.6 kW @ 8,250 rpm	12.4 kW @ 8,500 rpm
Max. Torque	31.5 Nm @ 5,250 rpm	12 Nm @ 6,500 rpm	14.9 Nm @ 6,500 rpm
Fuel Consumption/Emissions	3.3 l/100 km / 77.8 g/km	2.1 l/100 km / 52 g/km	2.2 l/100 km / 54 g/km

### Chassis, Dimensions and Weight

Length x Width x Height (mm)	2,160 x 742 x 1,160	2,085 x 740 x 1,129	2,085 x 740 x 1,129
Seat Height (mm)	805	799	799
Wheelbase (mm)	1,450	1,350	1,350
Kerb Weight (kg)	172	133.9	134.1

### Wheels, Suspension and Brakes

Brakes (Front/Rear)	256mm hydraulic disc with two piston caliper / 256mm	ABS System Type 2 Channel	ABS System Type 2 Channel
Tyres (Front/Rear)	110/70 R16 / 130/70 R16	100/80 R16   120/80 R16	100/80 R16   120/80 R16
Suspension Front	35 mm Telescopic	Telescopic	Telescopic
Suspension Rear	Dual-damper unit swingarm	Dual-damper unit swingarm	Dual-damper unit swingarm



Black



Pearl Cool White



Pearl Nightstar Black



**New 2023 Colour**  
Mat Pearl Cool White



Mat Ruthenium Silver Metallic



**New 2023 Colour**  
Mat Crescent Blue Metallic



**New 2023 Colour**  
Mat Pearl Falcon Gray



**New 2023 Colour**  
Mat Pearl Pacific Blue



**New 2023 Colour**  
Mat Lucent Silver Metallic



**New 2023 Colour**  
Mat Blacky Gray Metallic



**New 2023 Colour**  
Mat Cool Black



**New 2023 Colour**  
Mat Hyper Red



Mat Techno Silver Metallic



Candy Noble Red



Mat Axis Grey Metallic



**New 2023 Colour**  
Mat Galaxy Black Metallic



**New 2023 Colour**  
Mat Pearl Jasmine White



Mat Galaxy Black Metallic



Pearl Jasmine White



Pearl Jasmine White



Poseidon Black Metallic



**New 2023 Colour**  
Mat Suit Blue Metallic



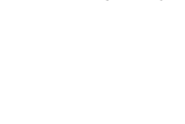
**New 2023 Colour**  
Mat Pearl Jupiter Gray



**New 2023 Colour**  
Mat Suit Blue Metallic



**New 2023 Colour**  
Mat Pearl Jupiter Gray



# Honda Technology

Honda has developed and applied many innovative technologies for its motorcycle range, designed to have the greatest possible benefit for you and the world around you.



## ANTI-LOCK BRAKING SYSTEM

Reduces braking pressure by monitoring the wheel speed, preventing the wheels from locking up.



## COMBINED BRAKE SYSTEM

Activates both front and rear brakes when the rear brake pedal (or lever) is engaged for a smooth and confident balance of braking control.



## DUAL CLUTCH TRANSMISSION

Combines the riding enjoyment of a manual transmission with the convenience of an automatic, delivering enhanced comfort and sporty performance.



## EURO 5

Complies with EURO 5 emissions regulations.



## HONDA EVOLUTIONAL CATALYSING SYSTEM

Oxygen-sensing system maintains an optimal air/fuel mixture for the most effective catalytic reduction of exhaust emissions.



## HONDA IGNITION SECURITY SYSTEM

Only allows the bike to be started by its original encoded keys to effectively protect against theft.



## HELMET STORAGE

Large storage space for 2 full-face helmets.



## HELMET STORAGE

Large storage space for a full-face helmet.



## ELECTRIC WINDSCREEN

Offers wind and weather protection raised and a sense of freedom when lowered.



## IDLE STOP SYSTEM

Automatically stops the engine running after three seconds at idle and restarts it instantly with a twist of the throttle, helping to reduce emissions and fuel consumption.



## TFT DISPLAY

Full colour TFT screen to control riding modes, along with other bike parameters. Displays key information such as Gear Position indicator and rev counter.



## USB CHARGING

We've subtly integrated a USB socket into the under-seat storage compartment. No need for an adaptor; simply connect your device's lead, plug it in, and go.



## LED LIGHTS

Brighter and more energy efficient than traditional bulbs, with no time delay and a longer life.



## PROGRAMMED FUEL INJECTION

Map-type computerised system maintains strong power and responsive performance in all conditions.



## SMART KEY

This innovative technology improves both convenience and security. As long as your key is in your pocket or bag, you can release the seat and start the engine with the press of a button.



## V-MATIC TRANSMISSION

Belt-converter transmission with advanced three-stage operation provides seamless shifting throughout a wide range of speeds delivered with twist-and-go ease.



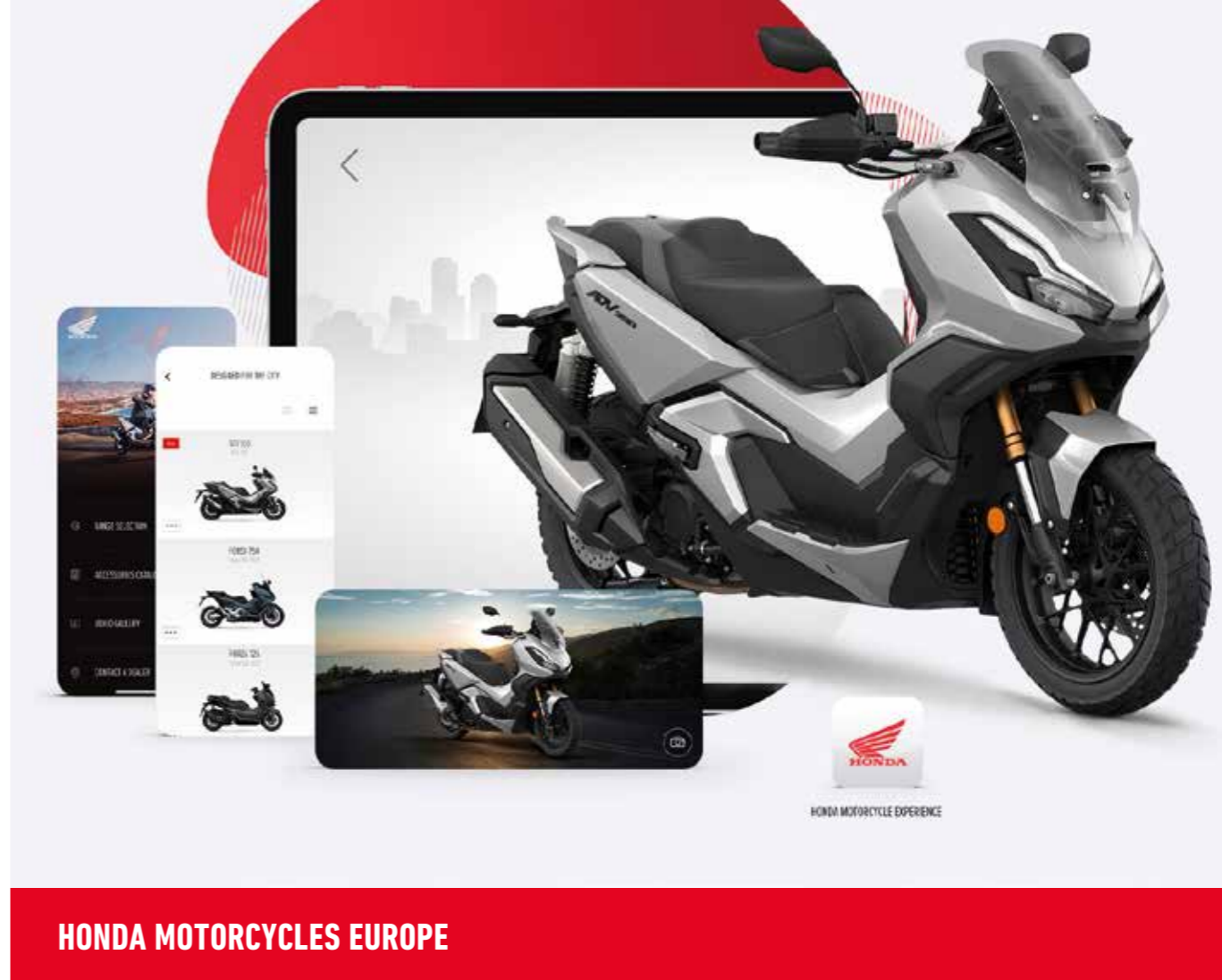
## PRO-LINK® REAR SUSPENSION

Monoshock rear suspension utilises a triangular linkage system to progressively increase damping force through range of rear swingarm movement.



## HONDA SELECTABLE TORQUE CONTROL

If the Honda Selectable Torque Control (HSTC) system senses an imminent loss of rear wheel traction it reduces torque to allow the tyre to grip.



## HONDA MOTORCYCLES EUROPE

Play around with various configuration options of your 3D bike in 360 view and transform it into your own environment with the Augmented Reality mode. Make sure to take a photo and share with your friends on social media. Take the first picture with your bike before you even order it. You can even locate your nearest Honda dealer and book a test ride to try out your dream bike.

Find out more by visiting our website or downloading the Honda Motorcycles Experience app.



An aerial, high-angle photograph of a modern cable-stayed bridge. The bridge's deck is a multi-lane asphalt road with white lane markings. A single motorcycle rider is visible on the road, moving away from the viewer. The bridge is supported by several thick, white, cylindrical pylons that fan out to the deck. The surrounding landscape is a mix of green fields, trees, and some buildings, suggesting a rural or semi-rural setting. The lighting is bright, casting shadows on the bridge deck.

The Power of Dreams

# Enthusiast. Rider. Dreamer.

**At Honda, we don't believe in taking the easy way out. Never settle. Never rest. That's what we believe.**

It's a philosophy that means we never feel like we are done. It's why we never stop questioning the limits of every Motorcycle. Why we never stop striving for success, pushing innovation, engineering and development to the very limit. And then doing it again. And again.

It's why we're constantly pioneering engineering firsts – like the inline 4-stroke engine, dual-clutch transmission, or the motorcycle airbag. It's why we go beyond the existing, unafraid to challenge the status quo of the motorcycle market.

That's the restless spirit that drives us forwards and is passed on to every Honda rider, pushing them on to their next adventure. On to the joy of true freedom. On to the next big dream.

Because, after all, it's our dreams that move us.





The specific details of this brochure do not apply to any particular product supplied or offered for sale. Manufacturers reserve the right to vary specifications, including colours, with or without notice at such times in such manner as deemed appropriate. Major as well as minor changes may be involved. Every effort, however, is made to ensure the accuracy of the particulars contained in this brochure. Consult your Dealer for details regarding the specifications of any featured product. This publication shall not constitute – under any circumstances whatsoever – an offer by the Company to any individual. All sales are made by the Distributor or Dealer subject to and with the benefit of the standard Conditions of Sale and Warranty provided by the Distributor or Dealer, copies of which may be obtained upon request. While efforts are made to ensure specification accuracy, brochures are prepared and printed several months in advance of distribution and consequently cannot always immediately reflect either changes in specification or in some isolated cases the provision of a particular feature. Customers are always advised to discuss specific details with the supplying Dealer, especially if a selection is dependent upon one of the features advertised. Please contact your local dealer for information and specifications. Please note that the fuel consumption figures provided are results obtained by Honda under standardised testing conditions prescribed by WMTc. Tests are conducted on a rolling road using a standard version of the vehicle with only one rider and no additional optional equipment. Actual fuel consumption may vary depending on how you ride, how you maintain your vehicle, weather, road conditions, tyre pressure, installation of accessories, cargo, rider and passenger weight, and other factors. You accept that if you do go ahead and make a purchase or enter into any kind of transaction, whether for payment or not, you did so entirely in reliance on your own skill and judgement and not on that of anyone else.

**RIDE WITH STYLE** Read the owner's manual thoroughly. Get to know your machine and its capabilities. Concentration assists anticipation. Observe other road users' movements. Brake in plenty of time. Always wear a helmet and quality kit, ride fit and NEVER after drinking alcohol. Good roadcraft and courtesy identify the skilled and stylish rider. Honda endorse the law that all helmet visors must comply with BS 4110. Visors that transmit less than 50% of visible light cannot legally be used on the road.

### **Honda Motor Europe – Motorcycles**

Cain Road, Bracknell, Berkshire, RG12 1HL England

insert local URL here



Please don't bin me.  
Pass me on to a  
friend or recycle me.

Honda Motor Europe sources  
paper responsibly from  
manufacturers within the EU.



BLUE SKIES FOR  
OUR CHILDREN

**FORZA FAMILY**  
**2023**



**FORZA**



**FORZA 350**



**FORZA 750**



**FORZA 125**

## Simply the best

Our range of ultimate scooters; are loaded with advanced technology and crisp sports performance, always defined by contemporary, attention-grabbing looks. The impressive Forza 750 is head of the family, with stunning looks and performance from its 745cc twin-cylinder engine, motorcycle-style brakes and high-quality suspension. It's smart, too, with mobile connectivity via Honda Smartphone Voice Control System (HSVCs).

Ever versatile, the Forza 350 wears a sharp new front body style with LED headlights that draw inspiration from the Forza 750. Aerodynamics helped sculpt the design, and the electric screen provides wind protection raised, or a sense of freedom when lowered. Its fuel-efficient eSP+ engine generates strong torque and power for fast acceleration around town and useful speed on the highway. The beautifully redesigned LCD instrument panel also features the option of HSVCs.

The hugely popular Forza 125 delivers agility in or out of town and, just like its big brother, has new bodywork and LCD dash. Its eSP+ engine delivers class-leading acceleration with 480 km tank range, effortless speed, smooth, responsive performance for in-city riding and longer-range commutes. Honda Selectable Torque Control (HSTC) monitors and maintains rear tyre traction for confident riding in all conditions. And a new Special Edition adds sports exclusivity.



**FORZA 750**

## Strong performer

### Loaded with serious hardware.

Wherever you need to be, in or out of the city, for business or pleasure, the Forza 750 combines a sharp, tight form with true GT comfort and practicality, plus sporty acceleration, motorcycle-style brakes and high-quality suspension.

The 745cc, 8-valve parallel twin-cylinder engine makes 43kW peak power, with huge 69Nm of torque. Slick-shifting six-speed DCT offers automatic or manual gear changes, with shifting character relative to the riding mode selected. Fuel economy of 3.6l/100km is possible, as is a potential cruising range of 370km from the 13.2L fuel tank. A 35kW A2 licence conversion is also available.

Location photos show 21YM

## Colour 5-inch TFT screen

### Intuitive system control with connectivity for networking on the move.

Everything you need to know is here, in high visibility. You can choose from three display designs and can present either with a white or black background to suit your style. One of the four default riding modes is shown, plus all setup parameters, Engine Power, Engine Brake, DCT, HSTC and ABS are shown top and mid-right. The bar along the bottom can contain a mixture of standard information, like trip meter and fuel consumption, as well as throttle angle and battery voltage.

For instant recognition, the rev-counter blocks glow green when cruising economically and flash yellow at high rpm. Of course, riding is a unique pleasure and what the Forza 750 is made for. But, if you've also got things to take care of, the Honda Smartphone Voice Control (HSVC) system links to your device for easy management of navigation, calls, messages and music and is displayed clearly on the right-hand side of the TFT screen. Operated easily and safely via voice or the left handlebar switchgear.





## Our ultimate GT scooter

We've put all the ingredients together to build our ultimate GT scooter. The sporty lines of the Forza 750's front fairing and generous, carefully shaped screen ensure a cocoon of still air at highway speeds. It is contemporary styling that draws the eye, wherever it rolls or stops, compact enough to get through tight city traffic and just as importantly, easily parked. An enjoyable, strong engine with plenty of power is a must, as is a chassis that elevates handling with excellent high-speed aerodynamics.

The seat envelops and supports beautifully – it's comfortable for two, with plenty of legroom for the rider. And, with 22L of underseat storage, there's room for a full-face helmet, while a built-in USB Type-C socket ensures your smartphone is always on charge. While in a pocket, the Smart Key streamlines operations including the keyless ignition system, steering lock, fuel cap and seat. All lighting is super-efficient LED for a distinct road presence with high visibility.



## Make it yours

We've made it easy to set the Forza 750 up as the ultimate riding companion with tailored Travel, Urban and Style Packs ready to go.

### TRAVEL PACK

For longer-range tours, the Travel Pack builds in extra carrying capacity – with durable 26L right and 33L left one-key panniers – and personal comfort thanks to heated grips and upper and lower leg deflectors.

### URBAN PACK

To help out on a busy day, the Urban Pack comprises of Smart Top Box with inner bag, which locks and unlocks by the same Smart Key that operates the ignition. To complete the pack, a centre console bag provides additional and easy access storage.

### STYLE PACK

Further enhancing the Forza 750's stunning looks, the Style Pack features a billet aluminium parking brake lever cover, stainless steel left and right lateral covers to protect the bodywork from boot scuffs and rubber and stainless-steel floor panels featuring the Forza logos.

Location photos show 21YM

## FORZA 750



### GT LUXURY

Business or pleasure, the Forza 750 combines a sharp, tight form with true GT comfort. Delivering extra rider legroom, wind protection and day-to-day practicality – with stunning response from both Throttle By Wire (TBW) engine control and smooth-shifting, six-speed, Dual Clutch Transmission (DCT) gearbox.

### CONNECTIVITY

We've packed this scooter with premium features that help you live life your way. Always-on connectivity keeps you in the loop via your smartphone and Honda Smartphone Voice Control system, and a vivid full-colour TFT instrument display.

### ROOM TO MOVE

The Forza 750's sleek and compact bodywork hides a useful 22L of underseat storage. More than enough for a full-face helmet with room to spare, plus an integrated USB Type-C socket ready to charge your device.

### BE BRIGHT, BE SEEN

All lighting is crisp, super-efficient LED, for a distinct road presence giving high visibility to other road users. Also, there is now one less thing to think about, as the indicators seamlessly auto-cancel.

### INNER STRENGTH

A tubular steel diamond frame provides rugged strength, while adjustable 41mm cartridge-style Up Side Down (USD) forks, lightweight aluminium swingarm and adjustable Pro-Link monoshock deliver superlative suspension control and steering precision.

### SOPHISTICATED TECHNOLOGY

There are four riding modes to choose from, with the option for customisation and a smooth, six-speed, Dual Clutch Transmission (DCT). The Honda Selectable Torque Control (HSTC) continuously manages rear tyre traction for confident and effortless riding.

### BRAKING POWER

Dual, radial-mount four-piston front brake calipers bite 315mm discs. ABS manages the braking force front and rear, for consistent stopping no matter the conditions you face and adjusts according to riding mode selection. It pays to be seen too, so the Emergency Stop Signal (ESS) function flashes the rear indicators to warn those behind under hard braking.

## Expanding your comfort zone

**Like an elite-level athlete, the Forza 750 is not just strong, it's clever.**

Throttle By Wire (TBW) manages the engine and Dual Clutch Transmission (DCT). Four riding modes are controlled via the 5-inch TFT screen, STANDARD, SPORT, RAIN and USER balance engine power, engine braking and DCT shifting schedule to match your riding conditions. At the same time, the level of ABS and Honda Selectable Torque Control (HSTC), for braking force and rear tyre grip also adjust to suit. The USER mode allows complete customisation of the Forza 750's engine and shifting performance between all of the available parameters. The integrated Honda Smartphone Voice Control system allows you to manage navigation, calls, messages and music. Operated easily and safely via voice or the left handlebar switchgear.



Location photos show 21YM

**FORZA 350**

## The power to go further

### Strength in numbers.

Its SOHC liquid-cooled eSP+ engine delivers a strong 21.5 kW peak power for fast acceleration to keep ahead of downtown traffic and plenty of top speed out on the highway. It's clean, too, with EURO5 compliance, and tuned for exhilarating response with super-smooth, V-Matic transmission. But, even with all this performance, the engine excels in fuel efficiency with a tank range of 350 km.



## Shaped to impress

### Sleek, smooth and sophisticated new style.

The Forza 350 always leads. It's a sleek, fast-moving sculpture of aerodynamic efficiency and modernity. The new front fairing, air scoop and headlights – taking strong direction from the Forza 750 – combine efficiently and manage airflow to reduce rider back pressure at speed. The electric screen provides full wind protection or complete freedom at the touch of a button, while the new LCD dash is a functional work of art.



## FORZA 350



### FAST FORWARD

New bodywork updates the Forza 350's style – and improves aerodynamics – for complete high-speed comfort. This is one versatile scooter; it'll slip through the air neatly at highway speeds and, thanks to such a compact form, can slice through jammed city streets with ease.

### TUNED AIRFLOW

The electrically operated windscreen adjusts, easily through a 180mm range as you ride. The screen height can be altered by simply pushing the button – up or down – on the left handlebar to suit the ever-changing weather conditions, reducing noise and fatigue. So, you can choose between maximum protection or a sense of freedom.

### A NEW DASH OF STYLE

The new instrument panel combines a stylish analogue speedometer and rev-counter, plus digital information and displays all information clearly at a glance, night or day. Honda Smartphone Voice Control system (HSVCs) allows you to link your mobile and stay connected!

### QUALITY RIDE

Rigid 33mm telescopic forks deliver supple control, whether on the open road or on rough city streets. Discs front and rear feature 2-channel ABS for assured braking control on slippery surfaces.

### POWER TO SPARE

The Forza 350 has the power and torque you need for fast acceleration and useful top speed, so you can do even more with it. The liquid-cooled eSP+ engine is also equipped with Honda Selectable Torque Control (HSTC) to maintain rear tyre grip in all conditions, so you can ride on with confidence.

### SHARP LIGHTING

The redesigned LED headlights – inspired by big brother Forza 750 – LED taillight and indicators shine bright and are designed as an integral part of the sculpted new style. But it's not just about looks; they ensure a big presence on the road day or night, improving visibility to other road users.

## Room for life

The Forza 350 has an excellent, secure storage capacity essential for city life. It features a handy USB Type-C socket in the glovebox to charge up a device, and enough under-seat space for up to two full-face helmets, so there's less to carry once you're where you want to be. Additionally, seamless Smart Key operation ensures total ease – put it in a pocket, and ride.



FORZA 125



## Make more from life

**Technology, practicality and refined, sophisticated style, all packed into one sports GT scooter.**

With sharp new looks, the Forza 125 stands out. But it's not just about show. Go Matters. Its eSP+ EURO5-specification engine delivers effortless speed and crisp, responsive performance for in-city riding and long-range commutes. Honda Selectable Torque Control (HSTC) monitors and maintains rear tyre traction in all riding conditions. And, to make a busy day go smoothly, a Smart Key operates the scooter's ignition and seat lock – from a pocket.

## Stylish practicality

**Be ready for whatever the city has in store.**

Wrapping the technology and engineering is updated bodywork – inspired by the range-topping Forza 750 – that provides comfort, compact dimensions and premium LED lighting. High-speed aerodynamics are tuned to reduce rider back pressure and the electric screen offers wind protection or cooling airflow. There's also huge storage potential; two full-face helmets fit under the seat and, if you want, you can partition the compartment to keep safe the things that matter. A handy USB Type-C socket in the glovebox keeps a mobile device charged.



## FORZA 125



### STYLE STANDS OUT

The Forza 125's sophisticated new design marks it out as a premium scooter. Sure, it's a head turner, but underneath is also perfectly practical; there's room for two full-face helmets under the comfortable seat and a USB Type-C socket in the glovebox. A fresh LCD dash is beautiful and easy to read.

### SAFER BRAKING

Slowing and stopping with 2-channel ABS inspires confidence on less than perfect roads or in wet conditions, just what you need to carry on with your day. It's precise, stable and operates through the front and rear disc brakes.

### ELECTRIC SCREEN

At higher speeds and at the touch of a button, raise the screen for maximum wind protection. Or, if you want to feel the breeze and enjoy the view, lower it completely. It operates smoothly through 180mm to give you the choice.

### HSTC

An additional technology to boost rider confidence in wet conditions is Honda Selectable Torque Control (HSTC), which works in the background to deftly manage rear tyre grip. And to keep the rider informed a 'T' indicator flickers on the dash when HSTC is actively reducing wheelspin.

### MORE CONVENIENCE

There's a USB Type-C charging socket in the glove box to keep your smartphone topped up while on the move. And, to maximise convenience, just put the Smart Key in your pocket, and keep it there. It'll start the engine, release the seat and lock it when you leave.



## Power with control

The enhanced Smart Power (eSP+) 4V, liquid-cooled SOHC powerplant delivers 11.7 kW peak power with 12.3 Nm torque. These numbers equal class-leading acceleration, an easy 90km/h cruising speed and a top speed of 108km/h. With no cost to performance, eSP+ makes the engine cleaner and more efficient. Idling Stop technology also increases fuel economy and reduces emissions by cutting the engine after 3 seconds at standstill, and silently starting it again with a twist the throttle.

A rugged steel frame, 33mm telescopic forks and adjustable rear shock absorbers give the Forza 125 traffic-beating agility with highway stability. An Anti-Lock Braking System (ABS) provides even more confidence, as does HSTC (Honda Selectable Torque Control) to keep the rear tyre gripping, no matter the conditions.

**FORZA 125**



## Special edition

The Forza 125 stands out wherever it goes. But, guaranteed to attract even more attention, the new Forza 125 Special Edition – sheathed in stealthy Mat Cynos Grey Metallic paint with contrasting metallic red wheels, vibrant red highlights on the dash and seat embossed with red stitch detailing – adds extra-level sporting desirability.



## Specifications

	FORZA 750	FORZA 350	FORZA 125
<b>Engine</b>			
Engine Type	Liquid-cooled 4-stroke 8-valve, SOHC parallel 2-cylinder	Liquid-cooled 4-stroke SOHC single	Liquid-cooled 4-stroke SOHC single
Engine Displacement	745 cc	330 cc	125 cc
Max. Power Output	43.1 kW @ 6,750 rpm (35 kW @ 6,000 rpm)	21.5 kW @ 7,500 rpm	10.7 kW / 8,750 rpm
Max. Torque	69 Nm / 4,750 rpm	31.5 Nm @ 5,250 rpm	12.3 Nm / 6,500 rpm
Fuel Consumption / Emissions	3.6 l/100 km 85 g/km	3.4 l/100 km / 79 g/km	2.4 l/100 km / 54 g/km
<b>Chassis, Dimensions and Weight</b>			
Length x Width x Height (mm)	2,200 x 790 x 1,485	2,145 x 755 x 1,500	2,145 x 755 x 1,500
Seat Height (mm)	790	780	780
Wheelbase (mm)	1,580	1,510	1,505
Kerb Weight (kg)	235	184	162
<b>Wheels, Suspension and Brakes</b>			
Brakes (Front/Rear)	310 mm double hydraulic disc with radial 4 piston caliper / 240 mm single hydraulic disc with 2 piston caliper (2 Channel ABS System Type)	256 mm disc / 240 mm disc (2 Channel ABS System Type)	256 mm disc / 240 mm disc (2 Channel ABS System Type)
Tyres (Front/Rear)	120/70 R17/ 160/60 R15	120/70 R15 / 140/70 R14	120/70 R15 / 140/70 R14
Suspension Front	41 mm Upside Down Fork	33 mm Telescopic	33 mm Telescopic
Suspension Rear	Monoshock damper, Pro-Link swingarm	Twin Shock	Twin Shock



**New 2023 Colour**  
Mat Ballistic Black Metallic



**New 2023 Colour**  
Iridium Gray Metallic



**New 2023 Colour**  
Mat Cynos Gray Metallic



**New 2023 Colour**  
Mat Pearl Pacific Blue



**New 2023 Colour**  
Mat Jeans Blue Metallic



**New 2023 Colour**  
Pearl Glare White



**New 2023 Colour**  
Mat Robust Gray Metallic



**New 2023 Colour**  
Pearl Falcon Gray



**New 2023 Colour**  
Pearl Siena Red



**New 2023 Colour**  
Pearl Falcon Gray



**New 2023 Colour**  
Mat Cynos Gray Metallic



**New 2023 Colour**  
Mat Pearl Pacific Blue



**New 2023 Colour**  
Mat Carnelian Red Metallic



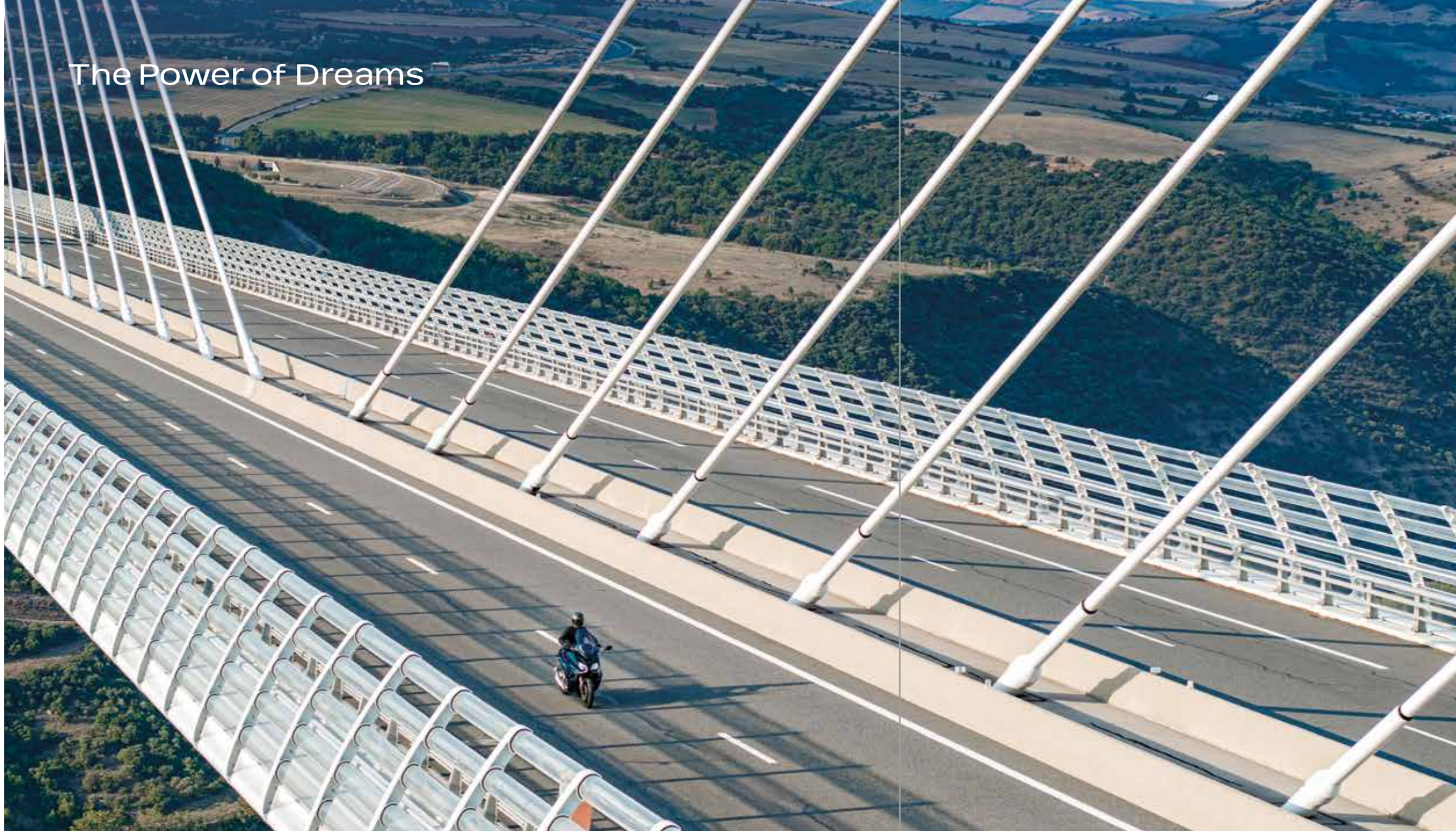
**New 2023 Special Edition**  
Mat Cynos Gray Metallic SE



21YM Shown



The Power of Dreams



# Enthusiast. Rider. Dreamer.

**At Honda, we don't believe in taking the easy way out. Never settle. Never rest. That's what we believe.**

It's a philosophy that means we never feel like we are done. It's why we never stop questioning the limits of every Motorcycle. Why we never stop striving for success, pushing innovation, engineering and development to the very limit. And then doing it again. And again.

It's why we're constantly pioneering engineering firsts – like the inline 4-stroke engine, dual-clutch transmission, or the motorcycle airbag. It's why we go beyond the existing, unafraid to challenge the status quo of the motorcycle market.

That's the restless spirit that drives us forwards and is passed on to every Honda rider, pushing them on to their next adventure. On to the joy of true freedom. On to the next big dream.

Because, after all, it's our dreams that move us.





The specific details of this brochure do not apply to any particular product supplied or offered for sale. Manufacturers reserve the right to vary specifications, including colours, with or without notice at such times in such manner as deemed appropriate. Major as well as minor changes may be involved. Every effort, however, is made to ensure the accuracy of the particulars contained in this brochure. Consult your Dealer for details regarding the specifications of any featured product. This publication shall not constitute – under any circumstances whatsoever – an offer by the Company to any individual. All sales are made by the Distributor or Dealer subject to and with the benefit of the standard Conditions of Sale and Warranty provided by the Distributor or Dealer, copies of which may be obtained upon request. While efforts are made to ensure specification accuracy, brochures are prepared and printed several months in advance of distribution and consequently cannot always immediately reflect either changes in specification or in some isolated cases the provision of a particular feature. Customers are always advised to discuss specific details with the supplying Dealer, especially if a selection is dependent upon one of the features advertised. Please contact your local dealer for information and specifications. Please note that the fuel consumption figures provided are results obtained by Honda under standardised testing conditions prescribed by WMTC. Tests are conducted on a rolling road using a standard version of the vehicle with only one rider and no additional optional equipment. Actual fuel consumption may vary depending on how you ride, how you maintain your vehicle, weather, road conditions, tyre pressure, installation of accessories, cargo, rider and passenger weight, and other factors. You accept that if you do go ahead and make a purchase or enter into any kind of transaction, whether for payment or not, you did so entirely in reliance on your own skill and judgement and not on that of anyone else.

**RIDE WITH STYLE** Read the owner's manual thoroughly. Get to know your machine and its capabilities. Concentration assists anticipation. Observe other road users' movements. Brake in plenty of time. Always wear a helmet and quality kit, ride fit and NEVER after drinking alcohol. Good roadcraft and courtesy identify the skilled and stylish rider. Honda endorse the law that all helmet visors must comply with BS 4110. Visors that transmit less than 50% of visible light cannot legally be used on the road.

**Honda Motor Europe – Motorcycles**  
Cain Road, Bracknell, Berkshire, RG12 1HL England  
insert local URL here



Please don't bin me.  
Pass me on to a  
friend or recycle me.

Honda Motor Europe sources  
paper responsibly from  
manufacturers within the EU.



BLUE SKIES FOR  
OUR CHILDREN